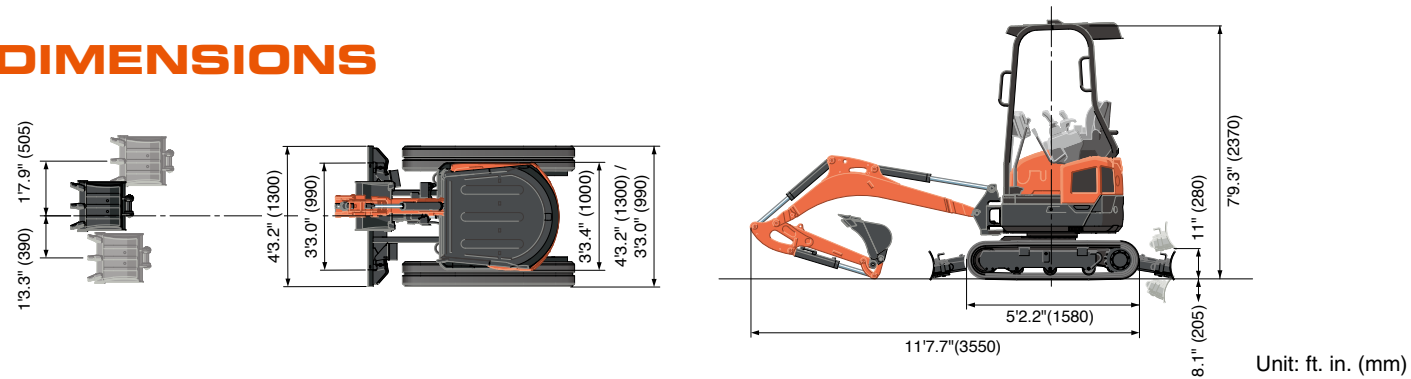


SPECIFICATIONS

Model		U17-5		
Type of ROPS / OPG (TOP Guard, Level I)		Canopy		
Type of tracks		Rubber		
Engine	Model	D902-E4-BH-6EU		
	Output (SAE J1995 gross)	HP (kW) / rpm	16.1 (12.0) / 2300	
	Output (SAE J1349 net)	HP (kW) / rpm	15.1 (11.3) / 2300	
	Displacement	cu. in. (cc)	54.8 (898)	
Dimensions	Overall length	ft. in. (mm)	11'7.7" (3550)	
	Overall height	ft. in. (mm)	7'9.3" (2370)	
	Overall width	Standard	ft. in. (mm)	4'3.2" (1300)
		Narrow	ft. in. (mm)	3'3.4" (1000)
	Track gauge	Standard	ft. in. (mm)	4'3.2" (1300)
		Narrow	ft. in. (mm)	3'3.0" (990)
Min. ground clearance	in. (mm)	6.1" (155)		
Hydraulic system	Pump capacity	GPM (ℓ/min)	4.6 (17.3)	
	Auxiliary hydraulic flow	GPM (ℓ/min)	7.3 (27.7)	
	Max. breakout force	Bucket / Arm	lbf. (kgf)	3552 (1609) / 1956 (887)
Drive system	Travel speed	Low / High	mph (km/h)	1.4 (2.3) / 2.7 (4.4)
	Max. traction force	Low speed	lbf. (kgf)	3170 (1438)
	Tumbler distance	ft. in. (mm)	4'0.4" (1230)	
	Crawler length	ft. in. (mm)	5'2.2" (1580)	
	Shoe width	in. (mm)	9" (230)	
	Ground contact pressure	psi (kgf / cm ²)	4.0 (0.29)	
Swing system	Unit swing speed	rpm	9.4	
	Boom swing angle	Left / Right	degree	63 / 58
Blade	Dimensions	Width Standard / Narrow	ft. in. (mm)	4'3.2" (1300) / 3'3.0" (990)
		Height	in. (mm)	10.2" (260)
	Max. lift above ground	in. (mm)	11.0" (280)	
	Max. drop below ground	in. (mm)	8.1" (205)	
Hydraulic oil (Reservoir / System)	gal (ℓ)	3.4 (13) / 5.8 (21.8)		
Fuel reservoir	gal (ℓ)	5.3 (20)		
Operating weight (Including operator's weight @ 165 lbs.)	lbs. (kg)	3902 (1770)		

DIMENSIONS



Kubota Tractor Corporation reserves the right to change the stated specifications without notice. This brochure is for descriptive purposes only and reasonable efforts were used to set forth the contained information; some items shown may be optional and some products shown may not be available at all dealerships. Kubota disclaims all representations and warranties, express or implied, or any liability from the use of this brochure. For complete warranty, safety and product information, consult your local Kubota dealer and the operator's manual. Power (HP/KW) and other specifications are based on various standards or recommended practices. For your safety, Kubota strongly recommends the use of a Rollover Protective Structure (ROPS) and seat belt in almost all applications. This brochure is intended for the United States and US territories only. For information regarding Kubota products or services outside these areas, see Kubota Corporation's global web site. Kubota does not provide parts, warranty or service for any Product which is re-sold or retailed in any country other than the country for which the Product(s) were designed or manufactured.



KUBOTA TRACTOR CORPORATION

1000 Kubota Drive, Grapevine, TX 76051 Tel 888-4 KUBOTA

Visit our web site at: www.kubotausa.com

©2025 Kubota Corporation



**Kubota
Genuine Parts**
for excellent
performance,
durability and
safety



For Earth, For Life
Kubota

U

KUBOTA ZERO TAIL SWING COMPACT EXCAVATOR U17-5

Kubota's U17-5 zero-tail swing compact excavator gives you the performance and efficiency you need in tight spaces.

